

Bridge

Version 2.2 User Manual



*ADVANTAGE*SOFTWARE

925 Central Parkway
Stuart, Florida 34994

www.eclipsecat.com

(772) 288-3266

(800) 800-1759

FAX (772) 288-1737

© 2011 Advantage Software, Inc.

©Copyright 2011 by Advantage Software, Inc.

All Rights Reserved Worldwide

This manual contains information and trade secrets proprietary to Advantage Software, Inc. It is intended for use by Advantage Software customers only.

No part of this manual may be copied or distributed, transmitted, transcribed, stored in a retrieval system, or translated into any human or computer language, in any form or by any means, whether electronic, mechanical, magnetic, manual or otherwise, or disclosed to third parties without the express written permission of Advantage Software, Inc.

TABLE OF CONTENTS

Table of Contents

| | |
|--|----|
| TABLE OF CONTENTS..... | 1 |
| INTRODUCTION | 1 |
| What is Bridge?..... | 1 |
| Setup | 1 |
| Features..... | 1 |
| Basic Procedure..... | 1 |
| THE BRIDGE WINDOW..... | 3 |
| NAVIGATING, MARKING, AND SEARCHING IN BRIDGE..... | 5 |
| MENUS | 7 |
| The File Menu..... | 7 |
| New..... | 7 |
| Open | 7 |
| Save | 8 |
| Save as | 8 |
| Setup | 8 |
| Connect | 10 |
| Print | 10 |
| Import..... | 10 |
| Export | 11 |
| Send to TextMap..... | 11 |
| Exit | 11 |
| The Edit Menu..... | 12 |
| Copy..... | 12 |
| Paste..... | 12 |
| Quick mark..... | 12 |
| Issue Code..... | 12 |
| Note..... | 13 |
| Attachment..... | 13 |
| Delete mark..... | 13 |
| Manage Issues..... | 14 |
| The Search Menu | 15 |
| Find..... | 15 |
| Find Previous..... | 15 |
| Find Next..... | 15 |
| Keywords..... | 15 |
| Word Index..... | 15 |
| Quicksearch backward and Quicksearch forward | 16 |
| Go to..... | 16 |
| Play multimedia..... | 16 |

| | |
|---|-----------|
| The View Menu | 17 |
| Show/Hide..... | 17 |
| Timecodes Toolbar button:..... | 17 |
| Line Numbers Toolbar button: | 17 |
| Marks Toolbar button: | 17 |
| Keywords Toolbar button: | 17 |
| Font..... | 18 |
| Zoom In (magnify)..... | 18 |
| Zoom Out..... | 18 |
| Colors..... | 19 |
| Spacing..... | 19 |
| Speed key: Ctrl+B Toolbar button: | 19 |
| Auto-scroll..... | 19 |
| Speed key: End Toolbar button: | 19 |
| The Help Menu..... | 21 |
| Help Topics..... | 21 |
| Visualizer..... | 21 |
| Manual..... | 21 |
| Keyboard Chart..... | 21 |
| Demo..... | 22 |
| About Bridge | 22 |
| APPENDIX A: TOOLBAR BUTTONS..... | 23 |
| Help: Opens Help file..... | 23 |
| Visualizer: Opens browser with 20+ Visualizer movies..... | 23 |
| Connect: Connect to Realtime data stream..... | 23 |
| Setup: Setup communications..... | 23 |
| Scroll: Cursor to end of transcript..... | 23 |
| Open: Opens a previously saved transcript..... | 23 |
| Save: Saves the current transcript..... | 23 |
| Print: Opens the Print dialog..... | 23 |
| Copy: Places highlighted text into the Clipboard | 24 |
| Paste: Places the contents of the Clipboard at the cursor position..... | 24 |
| Keywords: Opens a dialog listing keywords to highlight throughout the transcript..... | 24 |
| Play: Plays, if available, an audio or video file associated with the transcript..... | 24 |
| Optional button:..... | 24 |
| TextMap: if you have the TextMap program installed, when you're done with a realtime job, pressing this button will export the current job into TextMap immediately, and the TextMap program will run with its import feature opened automatically..... | 24 |
| APPENDIX B: SPEED KEYS..... | 25 |
| APPENDIX C: TOTAL ECLIPSE^M SETUP PROCEDURE..... | 27 |
| Beginning a Realtime/Bridge Session..... | 29 |
| INDEX..... | 31 |

INTRODUCTION

WHAT IS BRIDGE?

Bridge is a tool for viewing and interacting with a realtime data stream from CAT software.

SETUP

The Bridge user's computer is connected to the Court Reporter's computer by a cable that connects their serial ports. Multiple Bridge users may connect to a single court reporter by splitting the cable. Other transmission setups are also possible, and the Bridge user may call up transcripts from files stored on the user's own computer (or network).

FEATURES

When following a realtime transcript, the Bridge user may interact with the transcript in a variety of ways. When the reporter makes editing changes, the program is able to refresh the transcript in realtime. With little effort or distraction, the user may make a simple mark, insert a note, attach a file (a word processing document, a graphic file, a spread sheet, etc), or set a coded issue mark at any point in the transcript.

Files can be saved, and multiple files can be viewed, with each file opening in a separate Bridge window.

BASIC PROCEDURE

A typical realtime Bridge session might include five general steps:

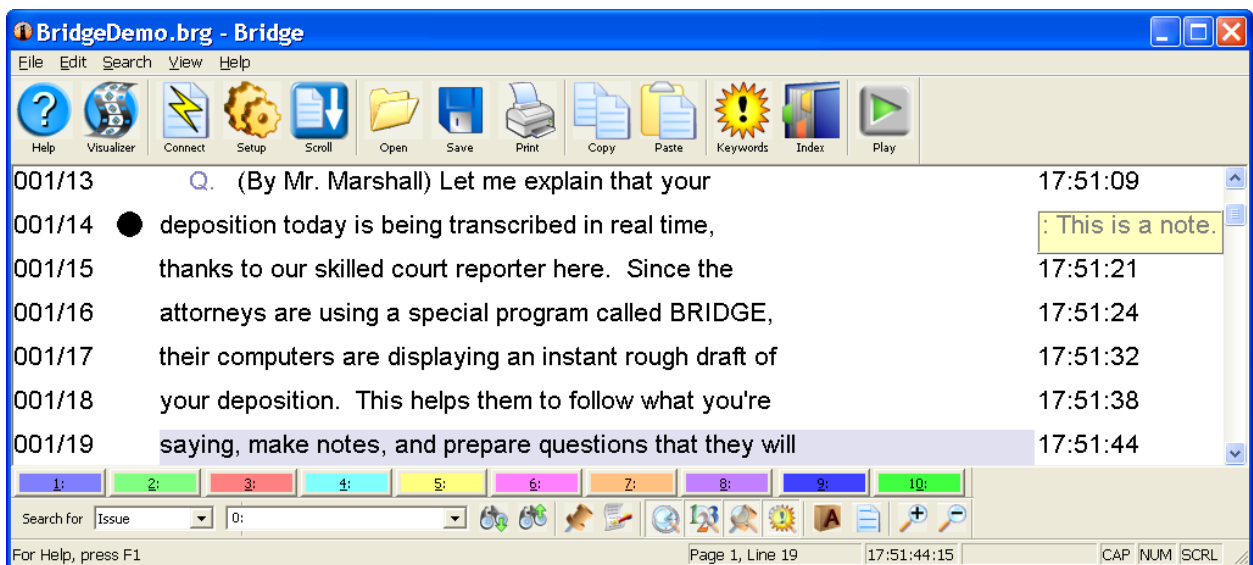
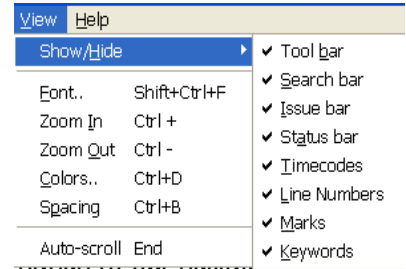
1. Connect to the court reporter and open Bridge, which creates a new document.
2. Choose preferences for working with the transcript. See **Setup**, page 8.
3. Connect to the transcript. See **Connect**, page 10.
4. Follow and interact with the transcript during the proceeding.
5. Print, Export, or Save the file (optional).

This page intentionally left blank.

THE BRIDGE WINDOW

The Bridge Window consists of the Menu bar, the Tool bar, the text area, the Issue bar (with buttons for Issue Codes 1-10), the Search bar, and the Status bar. The Tool bar, Search bar, Issue bar, and Status Bar can be toggled on or off, by selecting or de-selecting them in the **View** menu.

On the Status Bar are indicators of the cursor's location in the document, the timecodes for that line of the document, and the type of issue for any mark on that line. There are also indicators for Caps Lock on or off (CAP), Number pad lock on or off (NUM), and Scroll lock on or off (SCRL).



The size and position of the main window will be recorded so that when you close Bridge it will open back up in the same place.

The page numbers are displayed on the left of every line as page/line (001/15).

Timecodes are displayed on the right side.

Notes display in a small border with a background color that defaults to light yellow to look like a post-it note. If necessary, notes overlay the timecodes.

This page intentionally left blank.

NAVIGATING, MARKING, AND SEARCHING IN BRIDGE

Using Bridge to follow the creation of a transcript in Realtime, you can move around in the document using the following keys and commands:

1. The up (↑) and down (↓) arrow keys move the cursor up or down one line.
2. The **Page up** and **Page down** keys move the cursor up or down one screen.
3. The **Home** key moves the cursor to the beginning of the transcript.
4. The **End** key moves the cursor to the end of the transcript. You can also use the “Scroll” Tool bar icon. If a Realtime session is in progress, the cursor goes to the end and continues to follow along as text is created.



Note: If you scroll up, the bottom part of the screen automatically turns into a split-screen scrolling realtime display. When you move the cursor back down, the split-screen goes away. You can define how many lines of split-screen scrolling realtime you want at the bottom in the settings dialog (the default is 5.)

5. Pressing the **Enter** key opens a **Note** dialog box and places a mark on the line containing the cursor when you click **OK** in the **Note** dialog box. If there is a mark already on the line, pressing **Enter** will re-open the **Note** dialog box so you can edit your note.
6. Pressing the **Space** bar places a General mark on the line containing the cursor. If there is already a mark on the line, pressing the **Space** bar removes the mark, as long as you have not added a note. If there is a specific issue mark without a note on the line, pressing the **Space** bar removes the mark. Pressing the **Space** bar again will replace the mark.
7. Pressing a letter key places a mark on the line and lets you type in a note directly in the note area to the right of the transcript window. If several notes overlap vertically, the active note always displays on top.

Pressing the up (↑) or down (↓) arrow key exits the note area and moves the cursor up or down one line.

8. You can use the **Search** bar at the bottom of the window to search for any Text, Location, Mark, Note, Issue, Attachment, Question, Answer or Speaker, using the Find Next and Find Previous buttons after specifying what you want to find.
9. Additional buttons on the Search bar let you toggle on or off timecodes, page/line numbers, marks, and keyword highlighting. Other buttons let you adjust the line spacing and magnification (zoom in or out).
10. You can do a **Quicksearch backward** or **forward** using Speed keys or the **Search** menu items to search for the previous or next Note, Mark, Issue, Attachment, Question, Answer, or Speaker.

Speed keys for these and other features are listed in the Appendix, page 25.

In addition, clicking on the **Help menu/Keyboard Chart** opens, in Acrobat Reader, a one-page chart showing the most commonly-used keyboard shortcuts and icons.

This page intentionally left blank.

MENUS

There are five drop-down menus in Bridge: **F**ile, **E**dit, **S**earch, **V**iew, and **H**elp

THE FILE MENU

Speed key: **Alt+F**

The **File** menu controls functions that affect the entire document. Use the **File** menu to create (**N**ew), **O**pen, **S**ave, **P**rint, rename (**S**ave **A**s), or **E**xport a document. The **File** menu also offers the options to **S**etup your connection settings and **C**onnect to a realtime session. The **File** menu also keeps a list of recently opened documents—a handy shortcut for getting to frequently used files. To open one of the listed files, simply click on the filename appearing on the recent-documents list.

New

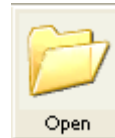
Speed key: **Ctrl+N**

This option opens a new, blank document. Use this when you want to start a new session. If you already have a document loaded when you hit the "connect" button it ADDS the new text to the existing document. You only use **New** if you want to start with a blank document.

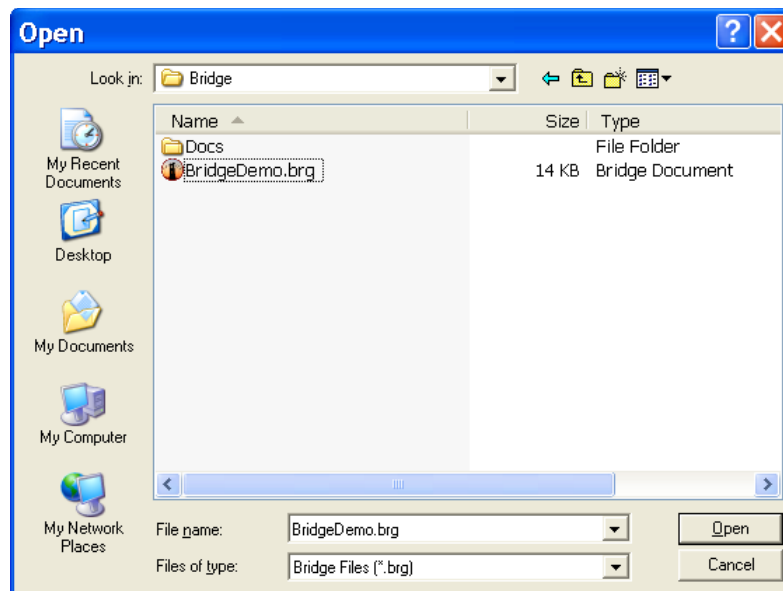
Open . . .

Speed key: **Ctrl+O**

Toolbar button:



Opens the **Open** file dialog box:



You use the **Open** option to view a previously saved file.

Save

Speed key: **Ctrl+S**

Toolbar button:



Saves a previously saved file. If the file has not been saved, the **Save As** dialog box opens, and you can name the file and save it.

Save as . . .

Speed key: **Shift+Ctrl+S**

Opens the **Save as** file dialog box:

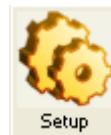


This menu choice gives you the option to save the file with a different name or in a different folder.

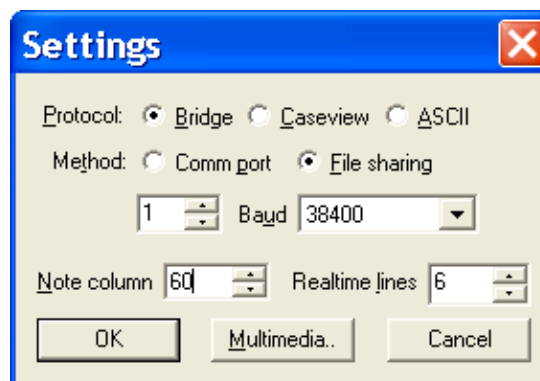
Setup . . .

Speed key: **Ctrl+U**

Toolbar button:



Opens the **Settings** dialog box:



Within the **Settings** dialog box:

The **Protocol**: radio buttons contain these choices:

Bridge

Caseview (Livenote/Summation)

ASCII

Comm port radio button: spin control to choose which COM port you will use to attach to the computer running CAT software.

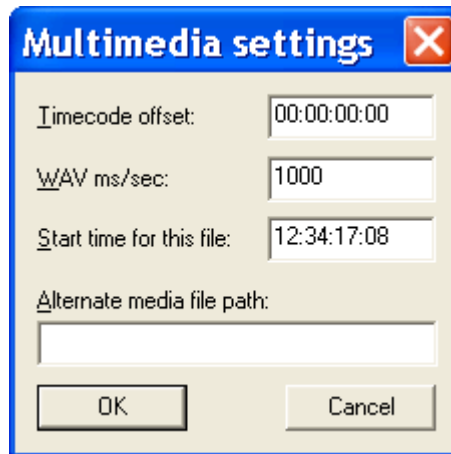
Baud rate drop-down list: 1200, 2400, 4800, 9600, 19200, 38400. Choose the highest setting Bridge and the CAT software can both go. 38400 is usually a good default value.

File sharing radio button: Check this when running Bridge on the same computer as Total Eclipse^M or across a network. Total Eclipse^M will save data into a file and Bridge will read data from that file in realtime.

Note column: specifies an arbitrary horizontal position for notes, expressed in number of characters. The default setting is 60 but can it be adjusted larger or smaller depending on how wide the margins in your CAT software tend to be.

Realtime Lines: the number of lines of split-screen scrolling realtime you want displayed at the bottom of the split-screen that appears when you scroll up during a Realtime session.

Multimedia: Opens a **Multimedia settings** dialog to control the settings for the audio file.



When finished with settings, click **OK** to choose them, or **Cancel** to exit without saving the changes.

Connect

Speed key: **Ctrl+T**

Toolbar button:



This opens the **Open** file dialog box, where you can choose the bridge file you wish to view. You will use **Connect** to view a realtime file, **Open** to view a previously saved file.

Print

Speed key: **Ctrl+P**

Toolbar button:



This will print the entire Bridge file exactly as it appears on the screen, including the font and other display information such as whether or not to show timecodes.

This printout will also include a report at the end, which lists the marks and notes and the page and line numbers where they appear.

Any notes that are written will appear on the right side of the text. The notes will wrap to several lines if necessary.

Import

Speed key: **Ctrl+I**

Under the **File | Import** function there are two file types available:

ASCII (*.txt, *.asc) and **Bridge notes import (*.brg)**.

The ASCII import is intended to be executed with no job on the screen. If you already have a job loaded, it will be closed first (and saved, if applicable.) The import creates a whole new document.

The ASCII import will import any kind of ASCII file into Bridge. Here are some tips for what Bridge is expecting to see:

- No headers or footers
- No page number embellishment (Page 1, -- 1 --, etc.) Any line that contains nothing other than digits and spaces is considered to be the page number. The page number should be at the top of the page.
- If you want notes to import properly, it's got to have timecodes. They have to be in the format 00:00:00 (frames/hundreths after that in the form of 00:00:00.00 or 00:00:00:00 are fine, but unnecessary. The seconds are mandatory.) Timecodes can appear anywhere on the line.
- The line numbers must be on the left side of the text. The spacing is irrelevant.

The Bridge notes import is intended to be used with a job already open. For example, if the attorney gets a Bridge file from an Eclipse user or imports an ASCII from a non-Eclipse user.

Selecting **File | Import | Bridge notes import** will list all of the existing Bridge files. Select the original, unedited file that contains the notes and marks you want to bring in and hit **Open**. That will read all of the notes and marks from the original version and put them into the new, edited file by aligning them with the appropriate timecodes. Note that this will

remove any other notes or marks that have been made in the current document, but that shouldn't be an issue since it's intended to be done on a new file.

Export

Speed key: **Ctrl+E**

The **Export** function will export the contents of a Bridge file. You can choose from two file types:

- **ASCII file – Text (ASCII) (*.txt)**
- **Portable Transcript Format (*.PTF)**

Send to TextMap

Speed key: **Alt+T** **Toolbar button:**



If you have the TextMap program installed, when you're done with a realtime job, you can use this option to export the current job into TextMap immediately. The TextMap program will be executed automatically, opening directly into its import feature.

When TextMap is installed, Bridge will have the TextMap button added to the Toolbar.



Exit

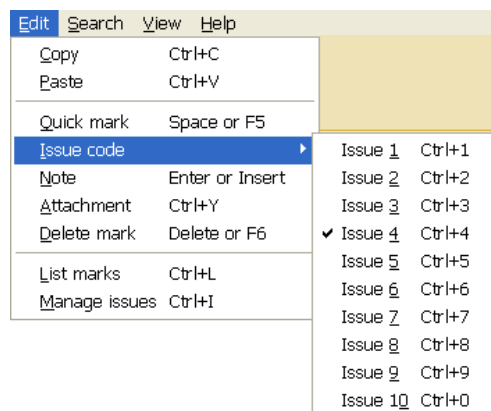
Speed key: **Alt+F4**

This function will close the program. If you have made changes to an open file, Bridge will ask if you want to Save your changes before exiting.

The EDIT MENU

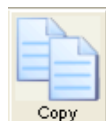
Speed key: **Alt+E**

Contains commands appropriate to the file currently open.



Copy

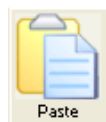
Speed key: **Ctrl+C** Toolbar button:



You can copy part or all of the document and paste it into any Windows software. Highlight the portion of the document you wish to copy, using your mouse or **Shift** plus up or down arrow keys, and choose **Edit | Copy** or **Ctrl+C**. Then open your word processing software (Notepad, Wordpad, Word, etc.) and choose **Paste (Ctrl+V)** to insert the selected text. Whatever is visible when you highlight the text (marks, timecodes, line numbers) will be included in the copying process. If marks are included, the type of mark will be noted, and any accompanying notes will also be displayed in the pasted document.

Paste

Speed key: **Ctrl+V** Toolbar button:



This option places text from the Windows clipboard into an annotation associated with a mark in Bridge. First, place text from any source (word processor, spreadsheet, etc.) on the Windows clipboard, using **Ctrl+C**. Place your cursor on the line where you want to place the mark with the information, and choose **Edit | Paste** or **Ctrl+V**. A mark will be placed on that line, with the text in the note.

Quick mark

Speed key: **Space** or **F5**

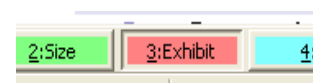
This option places a General mark at the cursor and lets you type a note without opening the Note dialog. If you cursor to the line containing the mark, you can type or backspace directly in the note area. Or you can press **Enter** to open the note dialog where you can edit the note.

Note: You can add a mark to any line your cursor is on and type in a note simply by beginning to type. When finished, the up or down keys will take you to the next or previous line of text in the transcript.

Issue Code

Speed keys: Color-coded Buttons numbered 1-10 on the Issue bar.

You can stack multiple issues on one line, which will be represented by stacked colored circles on the display. Issue buttons toggle on, so when the cursor is on an issue-coded line you can see the toggled-in buttons as well as the colored circles. Any issue can be toggled on or off at any time. The issue coding



can be done on a line whether it has a note or not, but the text of the issue code will appear before the note text in the note box on the right side.

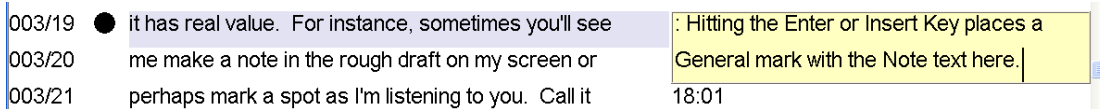
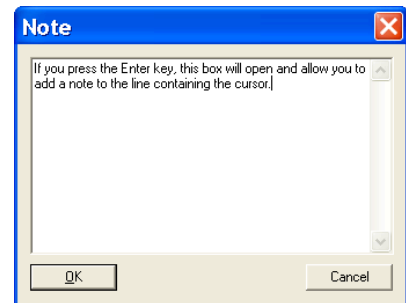
Note

Speed key: **Enter** or **Insert** Toolbar button:



This option opens the Note dialog box. When you are in the Note box, you can perform complex edits such as copy/paste, etc.

Clicking OK closes the dialog and adds a General mark, indicated by a black dot between the line number and the text.



When the cursor is on the correct line for the note, it becomes the “active” note, and you can see by the text color and a static cursor at the end of the text when you can type/backspace into the note.

If several notes overlap vertically, the active note always displays on top.

Attachment

Speed key: **Ctrl+Y**

If you execute this command on an empty line, it will open a file dialog, and let you attach a file. If the line already has an attachment, it will open it. To delete an attachment, you can use the **Delete** command, just like deleting a note or mark. Eclipse will ask if you are sure you to wish to delete the mark.

An attachment appears as a note containing the <<filepath>>. If there is a note on the line, the filepath will be below the text of the note.

Delete mark

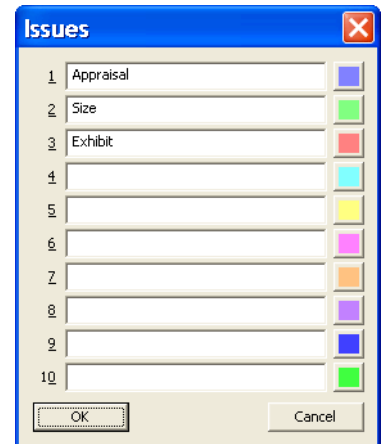
Speed key: **Delete** or **F6**

This option will delete the mark from the line at the cursor position. It will also delete any associated notes, and attached files. If the note area is not empty, Eclipse will ask if you are sure you to wish to delete the mark.

Manage Issues

Speed key: **Ctrl + I**

Use this command to open a list of issue codes, where you can type in descriptions for 10 different issues, and can also select issue colors, by clicking on the color to the right of the issue description field, and selecting a color using the color dialog. The colors are stored in the global Bridge settings; the issue descriptions are stored with the document.



THE SEARCH MENU

Speed key: **Alt+S**

Find

Speed key: **Ctrl + F**

This command places the cursor in the search data field on the search bar. In addition, the search bar contains a Search type selection list. In the Search type you can choose to **Search for:** Text, Location, Mark, Note, Issue, Attachment, Question, Answer or Speaker. For some searches, you can type additional information in the text field. For example, if you select **Text**, you can type text and hit [**enter**] to find it. If you select **Location** you can type a page/line or timecode. Selecting **Issue** causes the combo box to list all of the issues for the current job and you can select from that list.

For the **Text** search, the combo box lists the text from the last 10 searches. **Note** allows you to search for text inside notes. Text searches are whole-word matches and are case sensitive only if the search text contains any capital letters.

Find Previous

Speed key: **Shift+F3**

Toolbar button (on Search bar):



This option will move the cursor to the previous instance of the specified search data.

Find Next

Speed key: **F3**

Toolbar button (on Search bar):

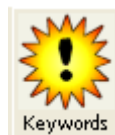


This option will move the cursor to the next instance of the specified search data.

Keywords

Speed key: **Ctrl+K**

Toolbar button:



This command displays an edit box for typing in keywords. Those keywords are then highlighted on the screen wherever they appear in the text. All keywords are whole-word matches and are only case sensitive if they contain any capital letters.

Word Index

Speed key: **Ctrl + W**

Toolbar button:



Quicksearch backward and Quicksearch forward

Speed keys: See graphic

These commands allow you to perform searches with single keystrokes without using the search bar. The cursor will move to the next line containing the selected search item.

| | | | |
|----------------------|------------------|------------|--------|
| Quicksearch backward | | Note | F8 |
| Quicksearch forward | | Mark | F9 |
| Go to.. | Ctrl+G or Ctrl+J | Issue | F11 |
| Play multimedia | Ctrl+M | Attachment | F12 |
| | | Question | Ctrl+Q |
| | | Answer | Ctrl+A |
| | | Speaker | Ctrl+R |

F8 will take you to the previous Note, with the cursor in the note ready to edit.

F9 will take you to the previous Mark, whether it has a note or not.

F11 will send your cursor to the drop-down list of issues on the Search bar.

Go to..

Speed key: **Ctrl+G or Ctrl+J**

This keyboard/menu shortcut selects **Location** in the Search type selection list on the **Search bar**, and puts the cursor in the search data field. This field will show a small prompt to suggest what to do, such as [Type a page/line or timecode].

Play multimedia

Speed key: **Ctrl+M**

Toolbar button:



This command will play the audio or video file associated with the transcript you are viewing, if one is available.

THE VIEW MENU

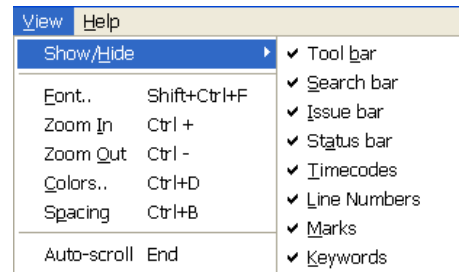
Speed key: **Alt+V**

This menu contains commands appropriate to the file currently open, as well as the visibility of components of the Bridge window.

Show/Hide

This option toggles on or off the **T**ool bar, **S**earch bar, **I**ssue bar, **S**tatus Bar, **M**arks and **K**eywords.

It also controls the **T**imecodes and **L**ine numbers.



Timecodes *Toolbar button:* 

Selecting **Show/Hide .. Timecodes** cycles the display of timecodes from hours and minutes (18:30) to hours, minutes and seconds (18:30:46) to off entirely. You can also toggle through the timecodes options using the Toolbar button on the Search bar.

Note that the display on the **Status bar** shows Timecodes in hours:minutes:seconds:tenths of a second (18:30:46:09).

Line Numbers *Toolbar button:* 

The Line Numbers On/Off toolbar button on the Search bar toggles the Page and Line numbers display on and off. Page and Line numbers are displayed on the left of every line as page/line (001/15).

Marks *Toolbar button:* 

This option toggles the display of marks on or off.

Keywords *Toolbar button:* 

This option toggles the display of Keywords in the document on or off.

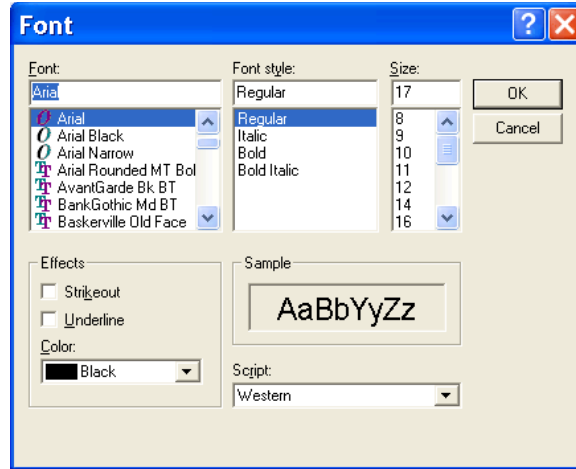
Font

Speed key: **Shift+Ctrl+F**

Toolbar button:



This menu choice opens the **Font** dialog box:



From here you can select preferences for:

Font

Font style (Regular, Bold, Italic, Bold italic)

Size

Effects (Strikeout and/or Underline)

Color

Script (Western or Hebrew)

Zoom In (magnify)

Speed key: **Ctrl+ +**

Toolbar button:



Zoom Out

Speed key: **Ctrl+ -**

Toolbar button:



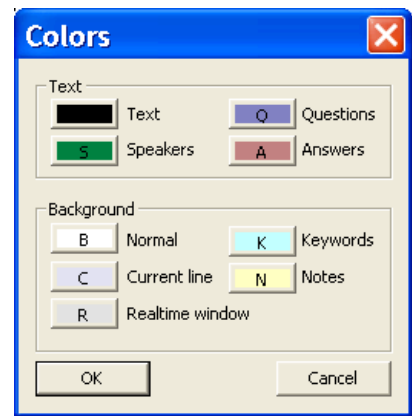
You can **Zoom in** and **Zoom out**, which works similarly to using successively stronger (Zoom in) or weaker (Zoom out) magnifying glasses. The **Zoom in** and **Zoom out** buttons on the Search bar control zooming.

Both buttons use a magnifying glass icon; the difference is that zoom in has a plus sign (+) on it and zoom out has a minus sign (-). The zoom-in magnifies the display to show the document in greater detail. The zoom-out reduces the display to show more of the document in the available display area. Each click of a zoom button changes the display incrementally.

Colors

Speed key: **Ctrl+D**

Selecting this menu option opens a **Colors** dialog, where you can set the colors for Text, the color of the labels for Speakers, Questions, and Answers, as well as the Background colors for Normal text, the Current line, the split realtime window, highlighted Keywords and Notes.



Spacing

Speed key: **Ctrl+B**

Toolbar button:



Choosing this menu option toggles the line spacing of the document you are viewing, moving through single spacing, 1.5 spacing, and double spacing. You can also use the button located on the Search bar.

Auto-scroll

Speed key: **End**

Toolbar button:



This menu option, speed key or Toolbar button sends the cursor to the end of the document.

Note: If you scroll up, the bottom part of the screen automatically turns into a split-screen scrolling realtime display. When you move the cursor back down, the split-screen goes away. You can define how many lines of split-screen scrolling realtime you want at the bottom in the settings dialog (the default is 5.)

This page intentionally left blank.

THE HELP MENU

Speed key: **Alt+H**

Help Topics

Speed key: **F1**

Toolbar button:



Opens the Bridge Help file.

Visualizer

Speed key: **Shift+F1**

Opens the Introductory Bridge Visualizer file in your browser, with links to over 20 Visualizer movies covering various aspects of using Bridge. Except for a 5-minute overview movie, most are designed to be watched with no audio.

Manual

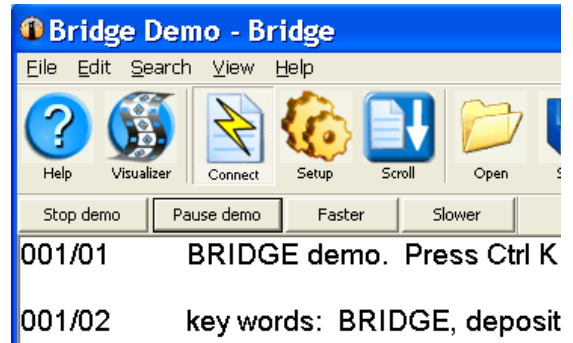
Opens the Acrobat Reader version of the Bridge User Manual.

Keyboard Chart

Opens a one-page chart showing the most commonly-used keyboard shortcuts and icons.

Demo

This menu item starts a self-running demo file. It acts exactly like a reporter writing realtime into the system, including applying edits. It works by slowly reading in a demo.law file from the same folder where Bridge is installed. You can use any .law file for a demo, so as an alternative to the particular demo file that ships with Bridge, you can prepare your own demo files to show your clients to demonstrate your work.





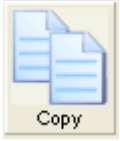

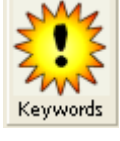

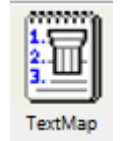
The demo function displays a toolbar along the top with [Stop demo][Pause demo][Faster][Slower] buttons.

About Bridge . . .

This menu option displays the Bridge version number and copyright information. This information may be utilized during troubleshooting by ASI support.

APPENDIX A: TOOLBAR BUTTONS

| Button | Function |
|---|---|
|  | <i>Help: Opens Help file</i> |
|  | <i>Visualizer: Opens browser with 20+ Visualizer movies</i> |
|  | <i>Connect: Connect to Realtime data stream</i> |
|  | <i>Setup: Setup communications</i> |
|  Scroll | <i>Scroll: Cursor to end of transcript</i> |
|  Open | <i>Open: Opens a previously saved transcript</i> |
|  Save | <i>Save: Saves the current transcript</i> |
|  Print | <i>Print: Opens the Print dialog</i> |

| Button | Function |
|---|---|
|  | <p><i>Copy: Places highlighted text into the Clipboard</i></p> |
|  | <p><i>Paste: Places the contents of the Clipboard at the cursor position</i></p> |
|  | <p><i>Keywords: Opens a dialog listing keywords to highlight throughout the transcript</i></p> |
|  | <p><i>Play: Plays, if available, an audio or video file associated with the transcript</i></p> |
| | <p><i>Optional button:</i></p> |
|  | <p><i>TextMap: if you have the TextMap program installed, when you're done with a realtime job, pressing this button will export the current job into TextMap immediately, and the TextMap program will run with its import feature opened automatically.</i></p> |

APPENDIX B: SPEED KEYS

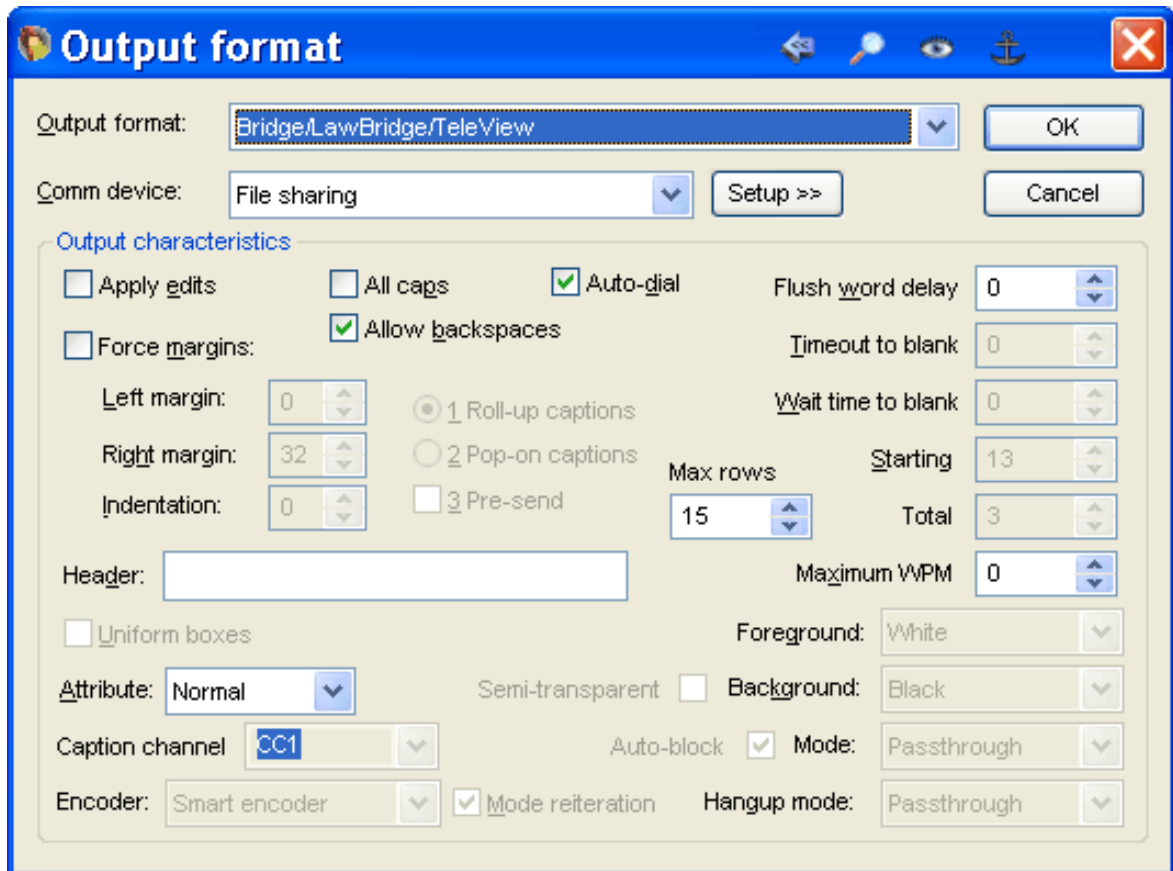
| Keystroke | Function |
|----------------------------------|--------------------------------|
| Ctrl+N | <u>N</u> ew file |
| Ctrl+O | <u>O</u> pen file |
| Ctrl+S | <u>S</u> ave file |
| Shift+Ctrl+S | Save <u>A</u> s.. |
| Ctrl+U | Set <u>u</u> p Communication |
| Ctrl+T | <u>C</u> onnect |
| Ctrl+I | <u>I</u> mport |
| Ctrl+E | <u>E</u> xport |
| Alt+T | Send to TextMap |
| Ctrl+P | <u>P</u> rint |
| Ctrl+C | <u>C</u> opy |
| Ctrl+V | <u>P</u> aste |
| Space or F5 | <u>Q</u> uick Mark |
| Ctrl+1, Ctrl+2 ... Ctrl+0 | <u>I</u> ssue codes |
| Enter or Insert | <u>N</u> ote |
| Ctrl+Y | <u>A</u> ttachment |
| Delete or F6 | <u>D</u> elete a mark |
| Ctrl+I | <u>M</u> anage Issues |
| Ctrl+F | <u>F</u> ind |
| Shift+F3 | Find <u>p</u> revious |
| F3 | Find <u>n</u> ext |
| Ctrl+K | <u>K</u> eywords |
| | Quick <u>s</u> earch backward: |
| F8 | <u>N</u> ote |
| F9 | <u>M</u> ark |
| F11 | <u>I</u> ssue |
| F12 | <u>A</u> ttachment |
| Ctrl+Q | <u>Q</u> uestion |
| Ctrl+A | <u>A</u> nswer |
| Ctrl+R | <u>S</u> peaker |
| | Quicksearch forward: |
| Shift+F8 | <u>N</u> ote |
| Shift+F9 | <u>M</u> ark |
| Shift+F11 | <u>I</u> ssue |
| Shift+F12 | <u>A</u> ttachment |
| Shift+Ctrl+Q | <u>Q</u> uestion |
| Shift+Ctrl+A | <u>A</u> nswer |
| Shift+Ctrl+R | <u>S</u> peaker |
| Ctrl+G or Ctrl+J | <u>G</u> o to .. |
| Ctrl+M | Play <u>m</u> ultimedia |
| Shift+Ctrl+F | <u>F</u> ont |

| Keystroke | Function |
|------------------|------------------|
| Ctrl + | Zoom <u>i</u> n |
| Ctrl - | Zoom <u>o</u> t |
| Ctrl+B | <u>C</u> olors.. |
| Ctrl+D | <u>S</u> pacing |
| End | Auto-scroll |
| F1 | Help topics |
| Shift+F1 | Visualizers |
| Alt+F4 | Exit |

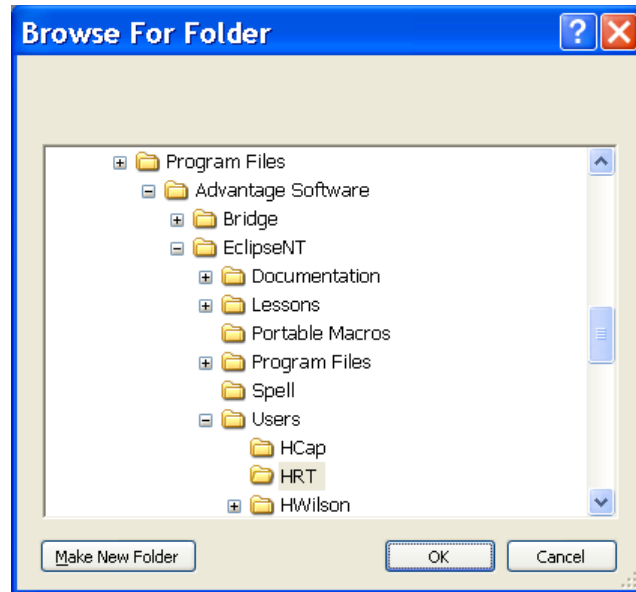
APPENDIX C: TOTAL ECLIPSE^M SETUP PROCEDURE

This information is for the Total Eclipse^M user setting up to run Bridge. In order to send a transcript to a user running Bridge, the Total Eclipse^M user must first add the Bridge settings to Total Eclipse^M.

1. Go to **User Settings (Alt+U) | Realtime**.
2. Your basic Realtime settings (**Flush Delay**, **Pending translation display**, **Follow always**, and **Division interval**) will apply to the Total Eclipse^M document, and have no bearing on the Bridge document.
3. In the **Output format** list box, see if Bridge/LawBridge/TeleView is listed.
 - a. If it is, select it, and choose **Change**.
 - b. If it is not listed, select **Add**, and the **Output** format dialog box will open. From the drop-down list of **Output formats**, choose Bridge/LawBridge/TeleView.



4. From the drop-down list of **Comm device**:, choose to send the output to a COM port, or to send the text to a file on a network. The Bridge user or users can then connect to the file on the network.
 - a. If using a COM port, choose **Com port**:, and select **Setup>>**. Choose the port you are using from the list, and set the **Baud rate** to 38K (38400).
 - b. If sharing the file over a network or running Bridge on the same computer on which you are running Total Eclipse^M, choose **File sharing**, and select **Setup>>**. The **Browse for Folder** dialog box will open, allowing you to select the location for the shared file.



5. Under **Output characteristics**, you can make choices that affect the way your text will appear in the Bridge file.
 - a. **Apply edits**: When selected, your editing changes will appear on the Bridge output. The edits will be applied when the cursor moves to the next paragraph.
 - b. **Allow backspaces**: Leave this option off if you do NOT wish to allow backspace characters to back up over existing text. Note that you can still delete *one word* in realtime even if this option is turned off.
 - c. **Force margins**: This option allows you to change the margins on the Bridge display. When this option is off (the default setting), the text on the display conforms to the paragraph margins set in **User Settings | Paragraph**.
 - d. **All caps**: This option sets the Bridge display to all capital letters.
 - e. **Flush word delay**: This option controls the amount of time (in milliseconds—for example, 2000 milliseconds=2 seconds) the system will wait before transmitting the very last word written. Each word will wait until the following space is transmitted before it is displayed. Setting this to zero turns the option off, and causes the system to wait indefinitely. You can set this

delay so that you will have the opportunity to delete a word the viewer has not yet seen.

- f. **Maximum WPM:** This option sets a maximum speed that words are allowed to display on the screen. If the written rate goes too high, this option will begin intentionally pausing slightly between each word displayed. When the written rate slows down, the display will continue and will catch up with the reporter.
6. When finished with the output settings, close the **User Settings** dialog boxes.

BEGINNING A REALTIME/BRIDGE SESSION

1. Connect your writer to an available COM (serial) port on your computer. Connect the Bridge user's computer to yours via serial ports; or log on to network to which the output file will be transmitted.
2. Press **Alt+T** to open the **Translate notes** dialog.
3. Mark the **Realtime** radio button.
4. Click **OK** to begin the realtime job.
5. At this point, you or the other user(s) can open Bridge and connect to your output. The Bridge user simply goes to **File | Connect (Ctrl+T)**. See below for additional Bridge settings.
6. When you are finished writing realtime, press **Shift+Alt+T** or use the **Production** menu | **Stop translation** command.

| |
|--|
| <p>Note: The realtime settings can be made once and left alone for subsequent realtime jobs. You do not need to reset them each time you open a realtime file.</p> |
|--|

This page intentionally left blank.

INDEX

| | | | |
|-----------------------|-------------------------|---|---|
| All caps..... | 28 | Multimedia..... | 9 |
| Allow backspaces..... | 28 | Multimedia settings..... | 9 |
| Annotation..... | 5, 13 | Navigating, Marking, and Searching..... | 5 |
| Apply edits..... | 28 | network..... | 1, 9, 28, 29 |
| Attachment..... | 13 | New..... | 7, 25 |
| Auto-scroll..... | 19 | Note..... | 13 |
| Baud rate..... | 9 | Open..... | 7, 10, 25 |
| Colors..... | 19 | Output..... | 27, 28 |
| COM port..... | 9, 28 | Paste..... | 12, 25 |
| Connect..... | 1, 7, 10, 23, 25, 29 | Play multimedia..... | 16 |
| Copy..... | 12, 25 | Print..... | 10 |
| Delete mark..... | 13 | Quick mark..... | 12 |
| Demo..... | 22 | Quicksearch..... | 5, 16, 25 |
| Edit Menu..... | 12 | realtime..... | 1, 7, 9, 10, 28, 29 |
| Exit..... | 11 | Realtime Lines..... | 9 |
| Export..... | 11 | Save..... | 1, 7, 8, 11, 25 |
| File Menu..... | 7 | Save as..... | 8 |
| File sharing..... | 9 | search..... | 5, 15, 16, 25 |
| Find..... | 15, 25 | Search..... | 3, 5, 7, 15, 16, 17, 18, 19 |
| Find Next..... | 15 | Search Menu..... | 15 |
| Find Previous..... | 15 | Settings..... | 9 |
| Flush Word Delay..... | 28 | Setup..... | 1, 7, 8, 23, 25, 27, 28 |
| Font..... | 18 | Show/Hide..... | 17 |
| Force margins..... | 28 | Spacing..... | 19 |
| Go to..... | 16 | Speed Keys..... | 25 |
| Help..... | 7, 21 | Status Bar..... | 3 |
| Help Menu..... | 21 | Stop translation..... | 29 |
| Import..... | 10 | TextMap..... | 11 |
| issue..... | 1, 3, 15 | timecodes..... | 3, 12 |
| Issue Code..... | 12 | Timecodes..... | 17 |
| Keyboard Chart..... | 21 | Toolbar..... | 3, 7, 8, 10, 11, 12, 13, 15, 16, 17, 18, 19, 21, 23 |
| Keystroke..... | 25, 26 | Toolbar Buttons..... | 23 |
| Keywords..... | 15 | Translate notes..... | 29 |
| Line Numbers..... | 17 | View..... | 3, 7, 17 |
| line spacing..... | 19 | View Menu..... | 17 |
| Manage Issues..... | 14 | Visualizer..... | 21 |
| Manual..... | 21 | Window..... | 3 |
| mark..... | 1, 3, 5, 12, 13, 14, 25 | Word Index..... | 15 |
| Mark..... | 29 | Zoom..... | 18 |
| Maximum WPM..... | 29 | | |
| Menu bar..... | 3 | | |