

Bridge Mobile - Non-Eclipse Reporter Setup

Prerequisites

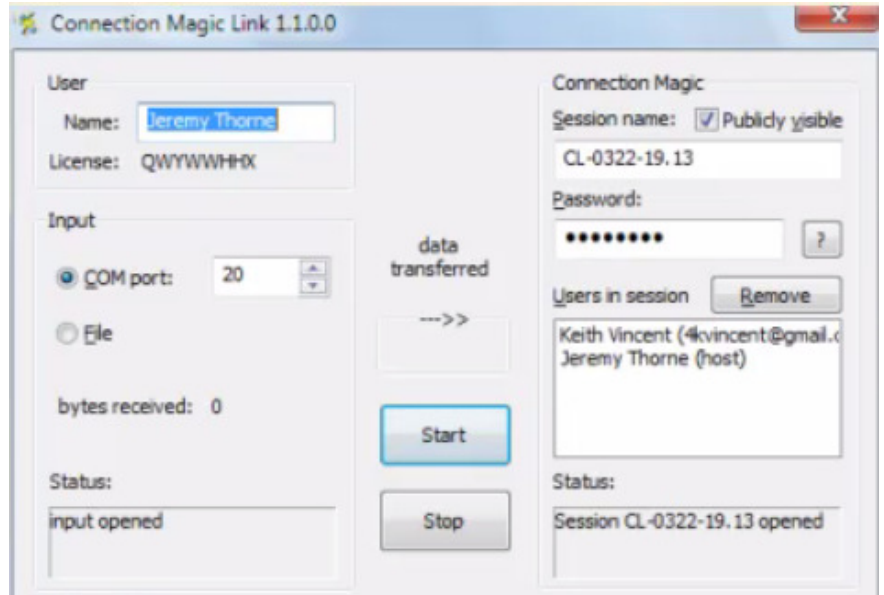
- Bridge Broadcaster license is required.
- Connection Magic Link is required to redirect output from com ports into Connection Magic system.

Internet or No Internet

- Default setup uses internet and can serve remote clients.
- **If internet is NOT available, download and run Connection Magic Local BEFORE running Connection Magic Link.**

Set up Connection Magic Link

- Enter your user name.
- Input COM port
must match the output port in your CAT software.
- Session name can be changed.
- "Publicly visible".
If checked,
clients pick name on list.
If NOT checked,
clients must type name.
- Password (MUST be typed.
(Your choice as to password)
- Press "Start" button
on Connect Magic Link dialogue.



Set up CAT Software Output

- Use the "Bridge" refresh protocol (if your CAT software supports it); otherwise, use "CaseView" protocol.
- Output COM port
must match the input port in the Connection Magic Link dialogue.
- Start realtime translation.

Client Setup & Connection: Bridge Mobile

- Client cannot connect until reporter starts translation.
- Internet used? Just touch/click lightning bolt icon.
- Internet NOT used? Connection Magic Local.
(With Connection Magic Local,
clients must be connected to reporter's network
BEFORE they can connect to the transcript.)
- Client picks session name (or types it, if not listed.)
- Client types password.
- Touch/click checkmark to open transcript.

