

Stenograph Writer Connection Issues

If you are calling into Support regarding connecting your writer:
Specifically Wave, Diamante, Luminex, Luminex II, or NexGen (not Mira or anything older)

Switch your writer back to Standard mode (not Mira Emulation mode). There will be a COM Port in Device Manager when it's in Standard mode.

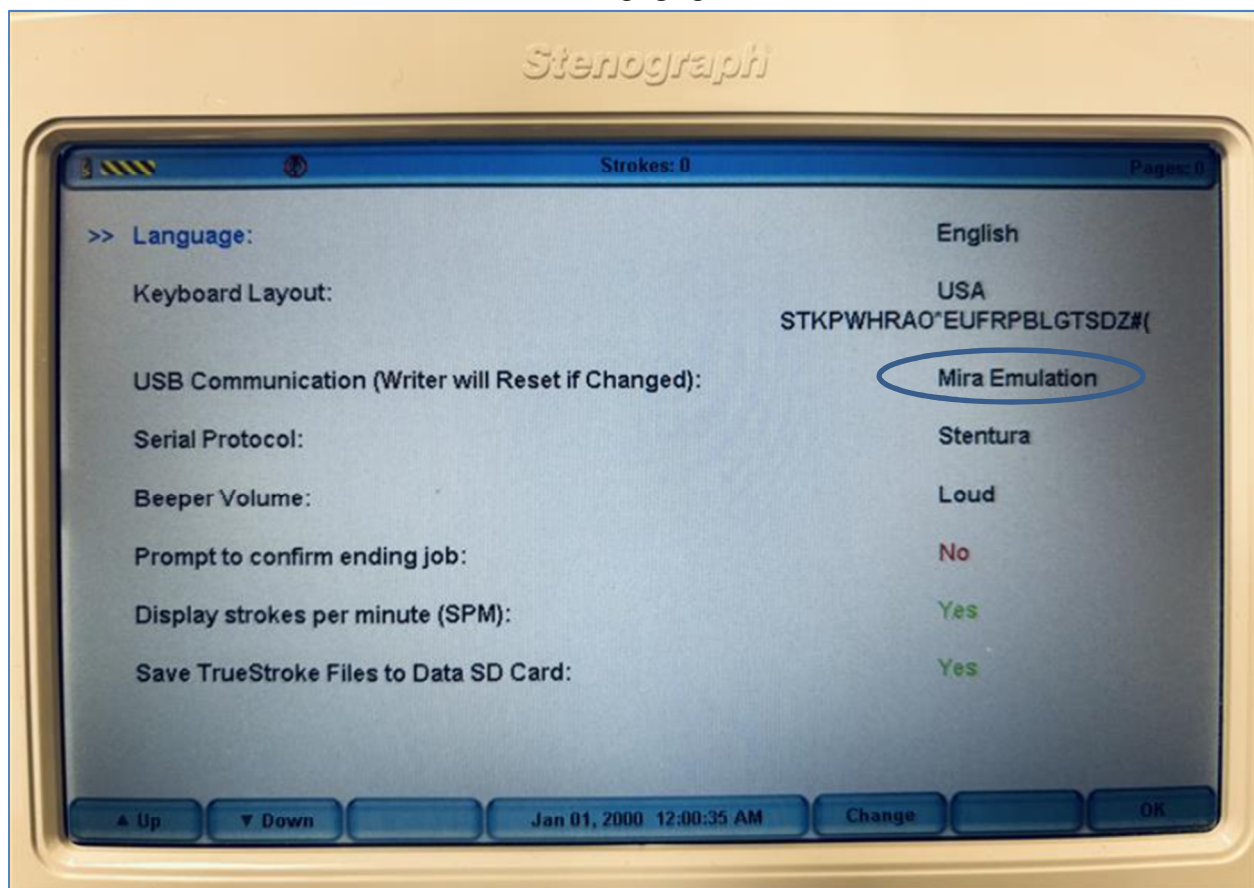
Please contact Stenograph to assist with changing your writer settings or follow these steps:

Change Stenograph writer to Standard

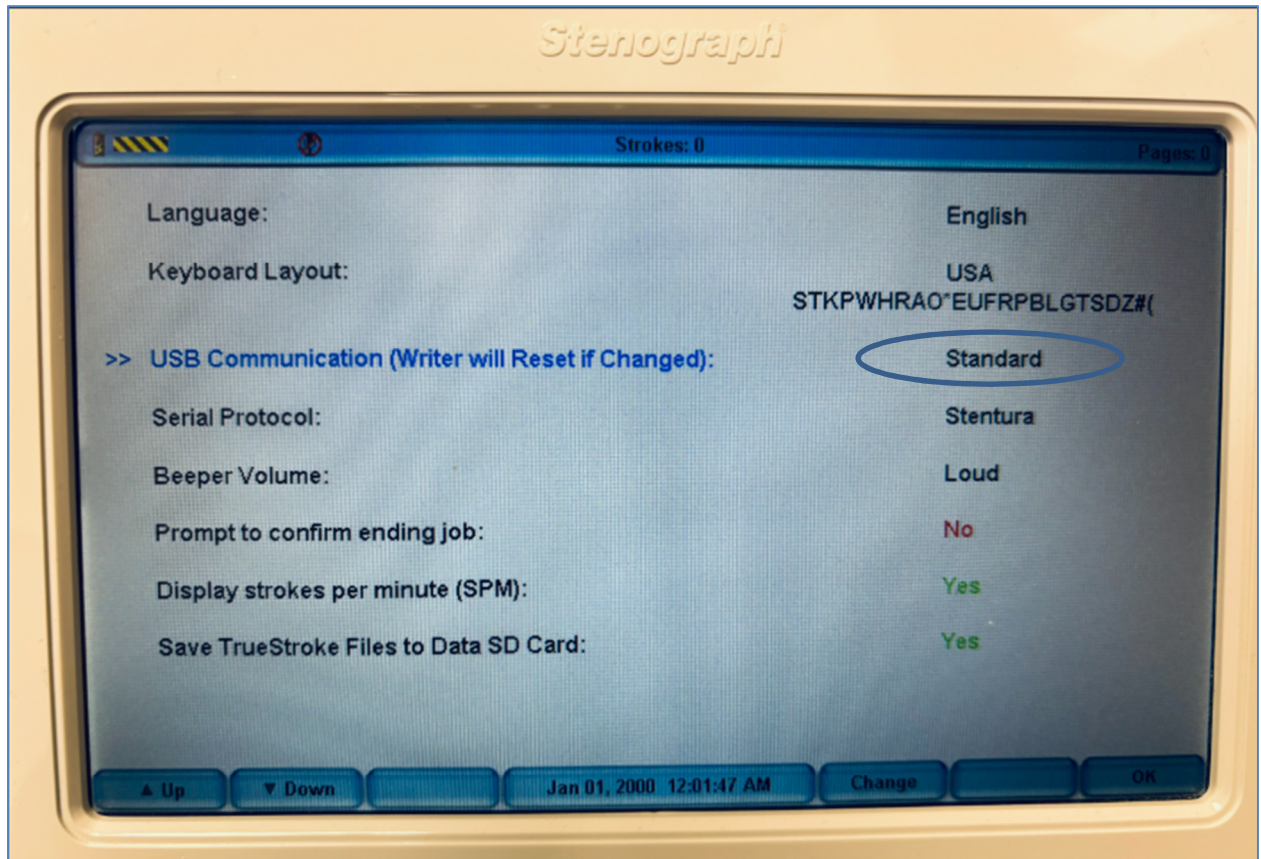
On your Stenograph writer go to:

- Setup
- More
- Options
- Scroll to USB Communications (Mira Emulation Mode) (Use your up/down buttons)
- Change
- Accept

Before



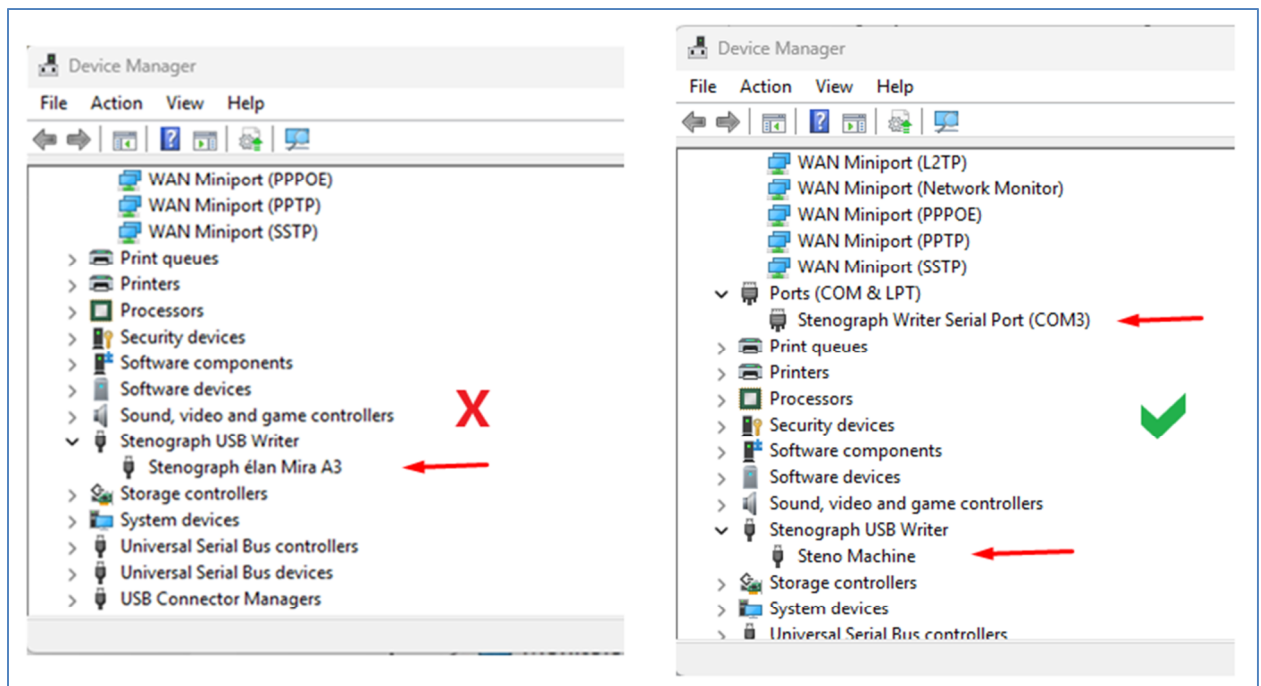
After



Check for COM Port in Device Manager

Open Device Manager in Windows.

If you see Stenograph USB Writer and below it reads as Stenograph élan Mira, then you are in Mira emulation mode and need to change that setting on your writer. When set to Standard mode, you will get a COM port.



Change the Input settings in Eclipse

In Eclipse go to:

- User Settings
- Input tab
- Change Realtime from to COM port
- Click Setup next to “Realtime from COM port” and change the port to the same one listed for the Stenograph writer in Device Manager. If you don’t recall the port number, click “Device manager” at the bottom of the COM port setup window.
- Click OK and OK to close settings

